



Email – support@axxya.com

Help - Center -- <https://nutritionistpro.freshdesk.com/support/home/>
For faster service please either update your current ticket or submit a new one. You can do that 2 ways -- through the webpage above or by emailing us.

Data Extraction Tool cannot extract while Network Database Engine for Nutritionist Pro™ Desktop is active

For the Data Extraction Tool, please make sure the Database Server Engine is not active, otherwise the file is in use message will be seen and the user will not be able to extract data. Please turn the engine off by clicking Stop Server on the Database Server Monitor and you can then extract the data as needed see figure 2.

Figure 1 DET tool message while DB is being used

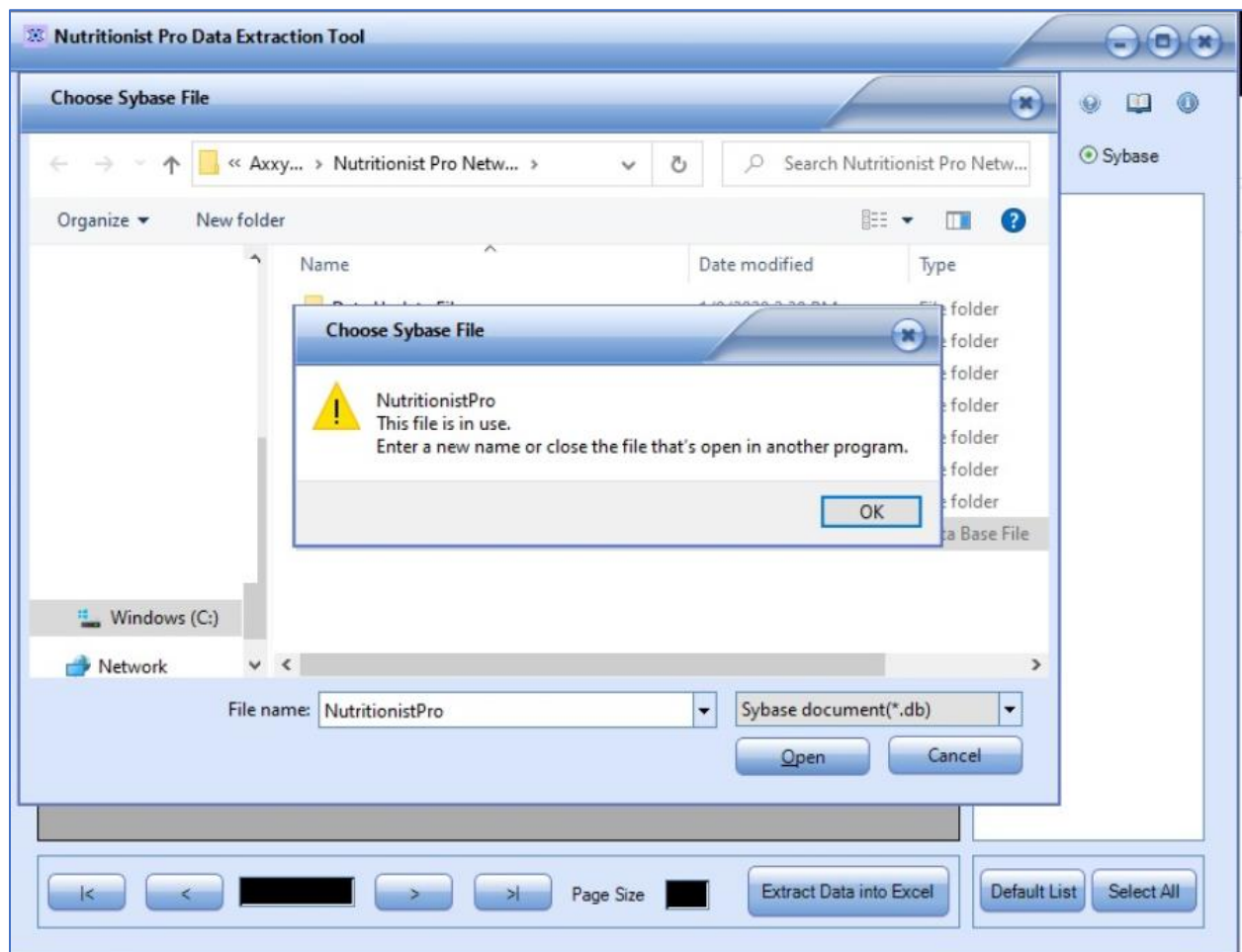


Figure 2 Database Server monitor for Nutritionist Pro application

