

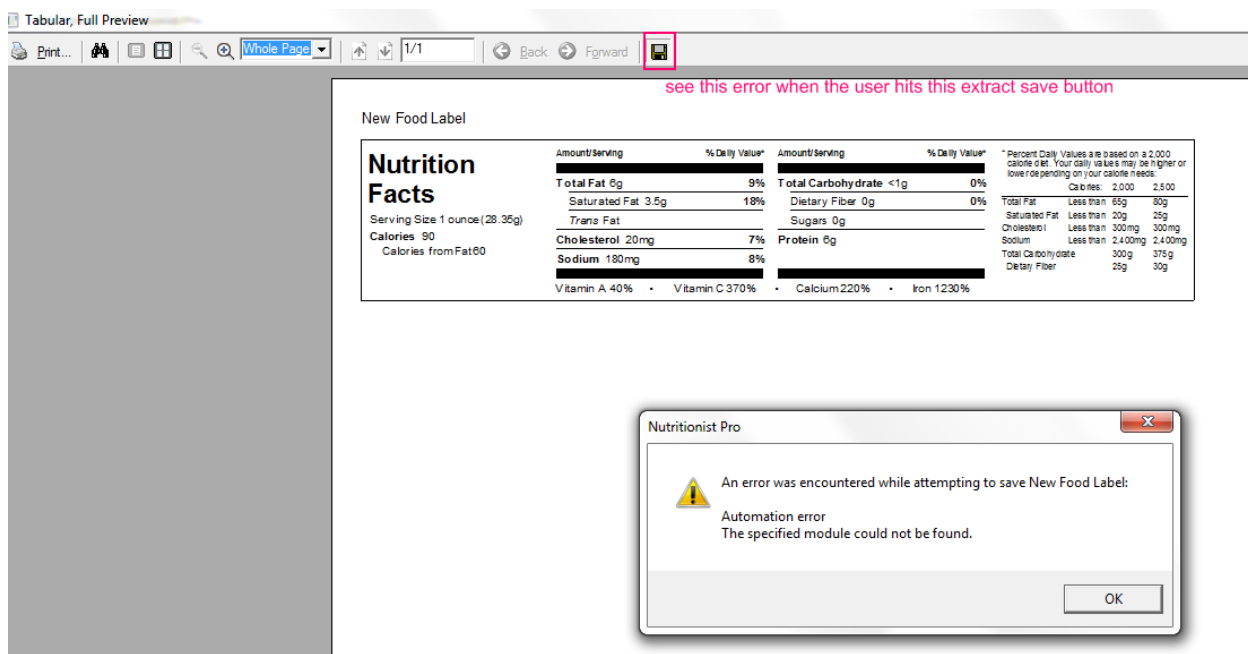


Email – support@axxya.com
Help - Center -- www.nutritionistpro.com/help-center/
For faster service please either update your current ticket or submit a new one. You can do that 2 ways -- through the webpage above or by emailing us.

Error - Automation error for Food labeling module for Nutritionist Pro

- When a Food Label is extracted to be saved, the user may see this automation error.
- To correct this, a .dll file needs to be registered. Steps are shown below for 32 bit and 64 bit machines.

Figure 1-- Error message seen in application NPRO



What type of machine do you have a 32 or a 64 bit machine.

- The steps to fix this issue are slightly different for both.
- If you are not sure which one you have go to Start Button/computer and then RIGHT CLICK and select Properties see image below.
- If you already know what type of machine you have (32 or 64 bit) you can skip this step

Figure 2 how to check the type of bit and os on machines

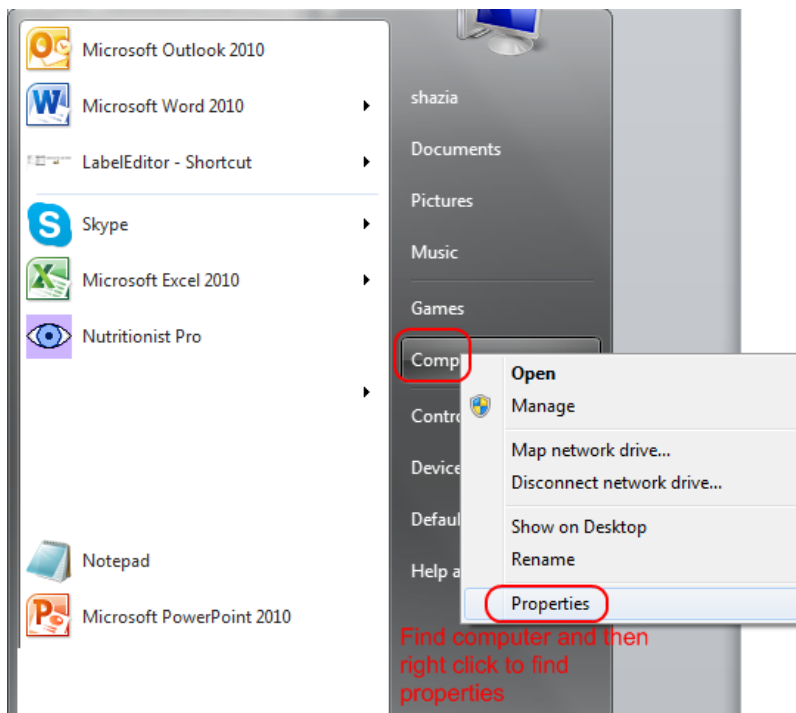
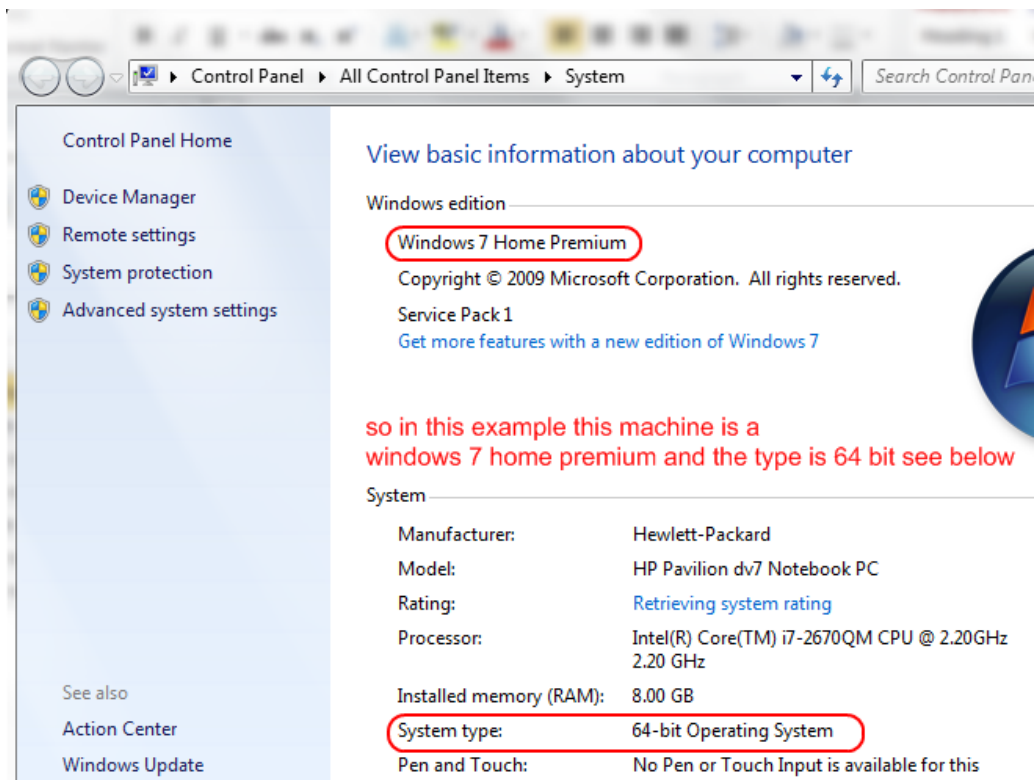




Figure 3 in this ex this is a win 7 machine that is 64 bit



Now that you know what type of machine you have follow the steps that are right for your machine ---32 or a 64 bit as appropriate

How to register msbvm50.dll for Vista or windows 7 and 8 Operating System.

1. Close Nutritionist Pro program
2. Click on Start/Computer/Local Disk/Program Files/Axxya Systems/Nutritionist Pro/Technical Files [see image below figure #4](#)
3. Right click on “msbvm50.dll” file and select COPY
4. Go to your windows explorer and find a folder appropriate for your machine
 - a. If you have a **64 bit machine** look for a folder called syswow64 see [the path is shown in figure 5 below](#)
 - a. Right click in the white space and paste the msbvm50.dll here in the white space
 - b. If you have a **32 bit machine** look for a folder called system32 [the path is shown in figure 6 below](#)
 - a. Right click in the white space and paste the msbvm50.dll here in the white space
5. Close window explorer window after you are done pasting
6. Click on the Start menu and type cmd [as shown in figure 7 below](#)
7. When command prompt opens up type in a command based on your machine type
 - a. If you have **a 64 bit machine** then follow these steps
 - a. cd c:\windows\syswow64
 - i. [See image figure 8 below](#)
 - ii.
 - iii. Hit enter
 - iv. Then enter this 2nd command on the same screen
 1. regsvr32 msbvm50.dll
 - a. [See image figure 9 below](#)
 - v.
 - vi. press “ENTER” on the keyboard
 - vii. you will see a dll registered successfully pop up as shown in [figure 9 below](#)
 - b. If you have **a 32 bit machine** then follow these steps

a. regsvr32 msvbvm50.dll

i. See image figure 10 below for a 32 bit machine

ii. `regsvr32 msvbvm50.dll`

iii. Hit enter

iv. you will see a dll registered successfully pop up as shown in figure 10 below

8. Close out of command prompt

9. Open Nutritionist Pro program. Go to the food label section and try to save the label in another image again the error should be gone.

Figure 4 -- location of msvbvm50.dll file

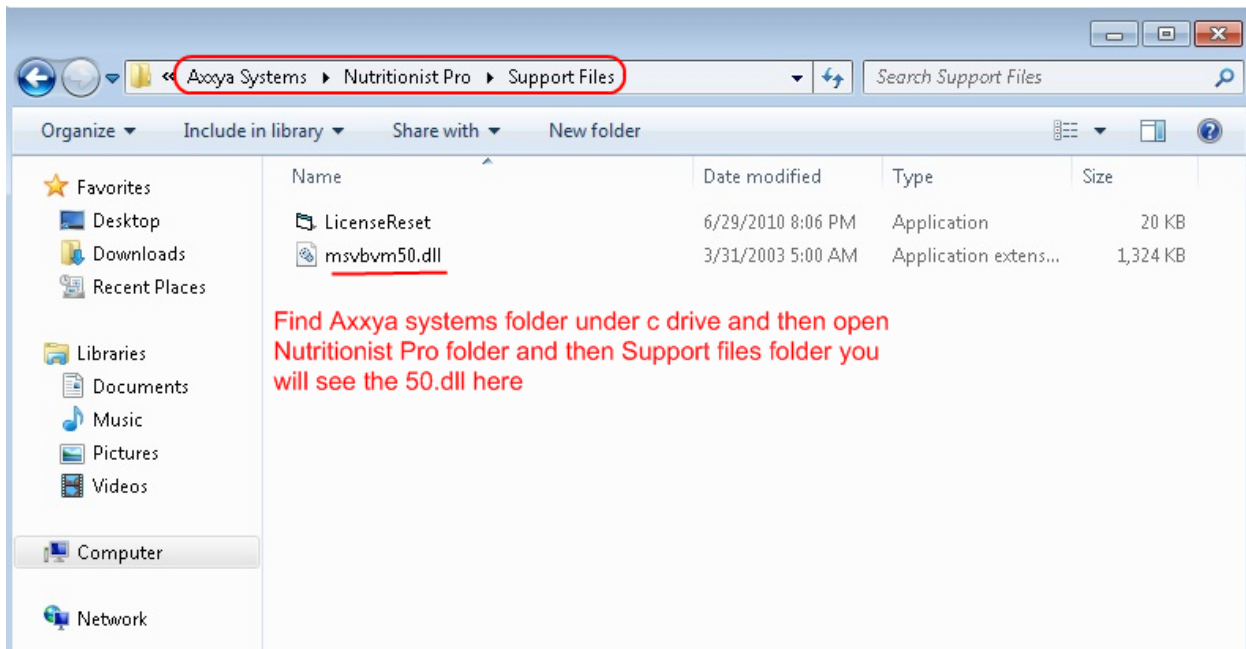


Figure 5 -- paste the 50.dll here in the syswow64 folder FOR 64 bit machine image

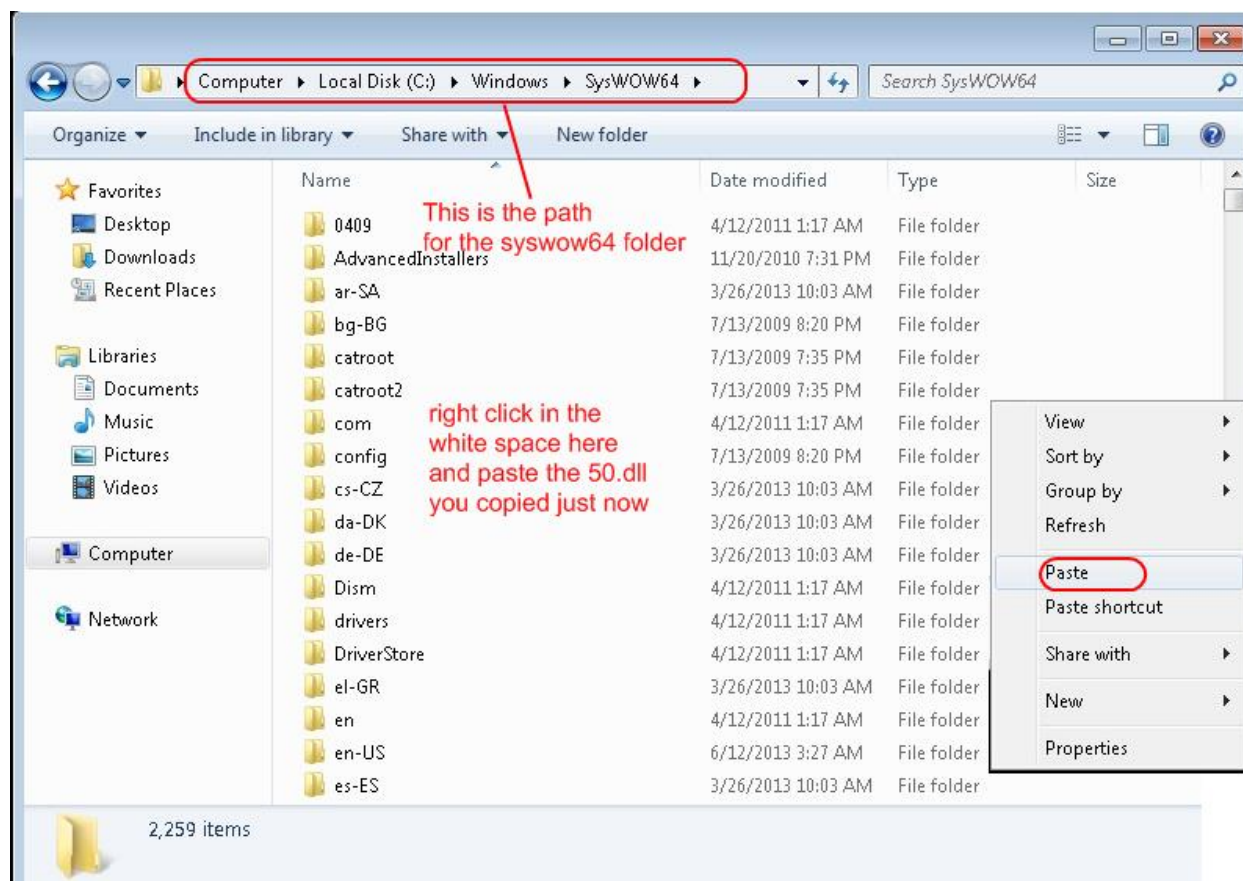


Figure 6 -- paste the 50.dll here in the system32 folder FOR 32 BIT machine image

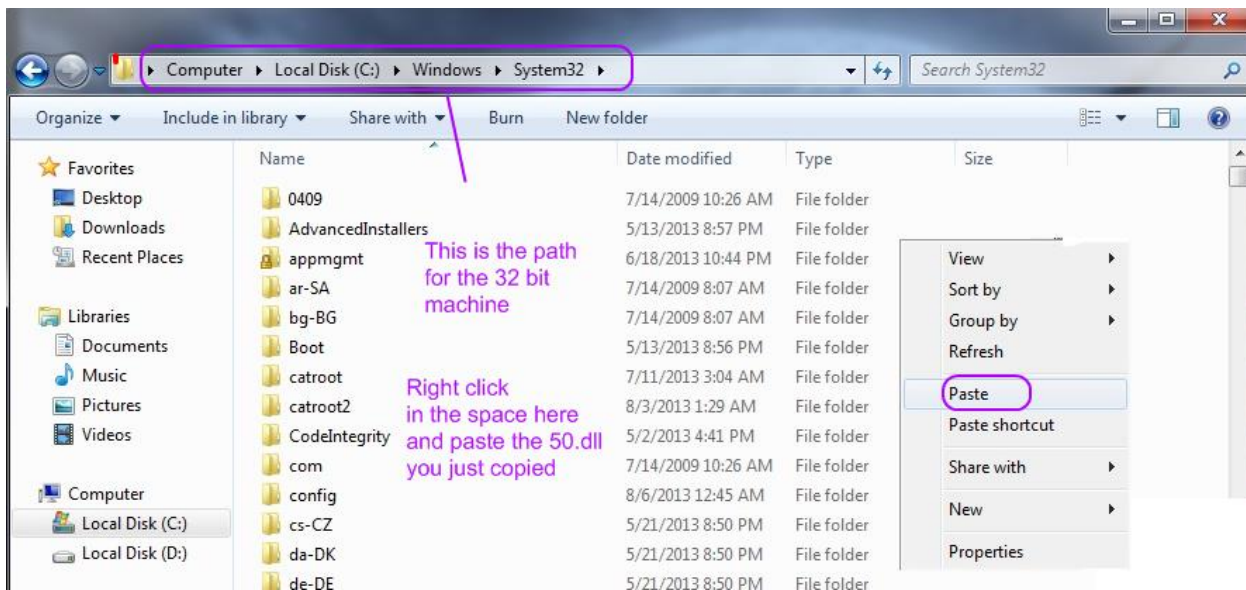


Figure 7 how to open CMD

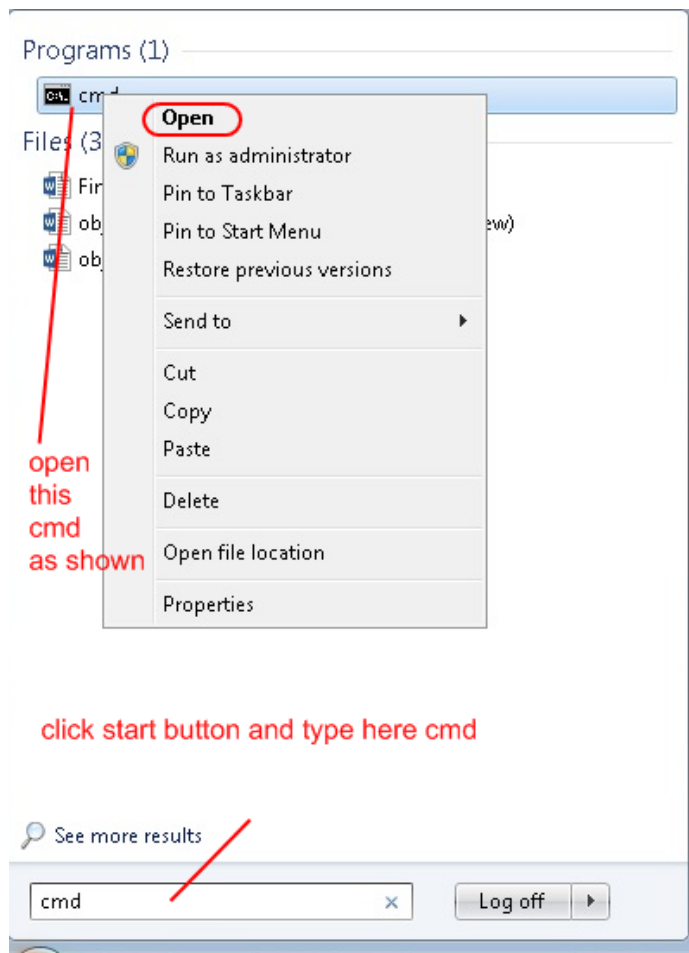


Figure 8 type this command here as shown for 64 bit machine

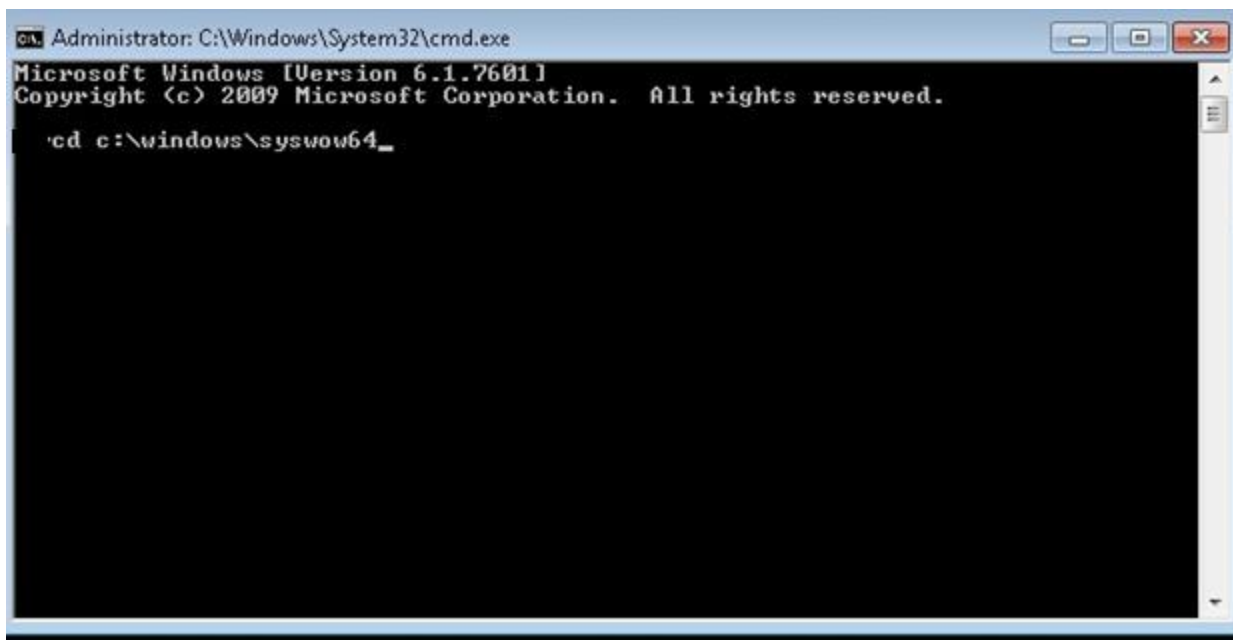


Figure 9 -- type in the command for the dll as shown for 64 bit machine

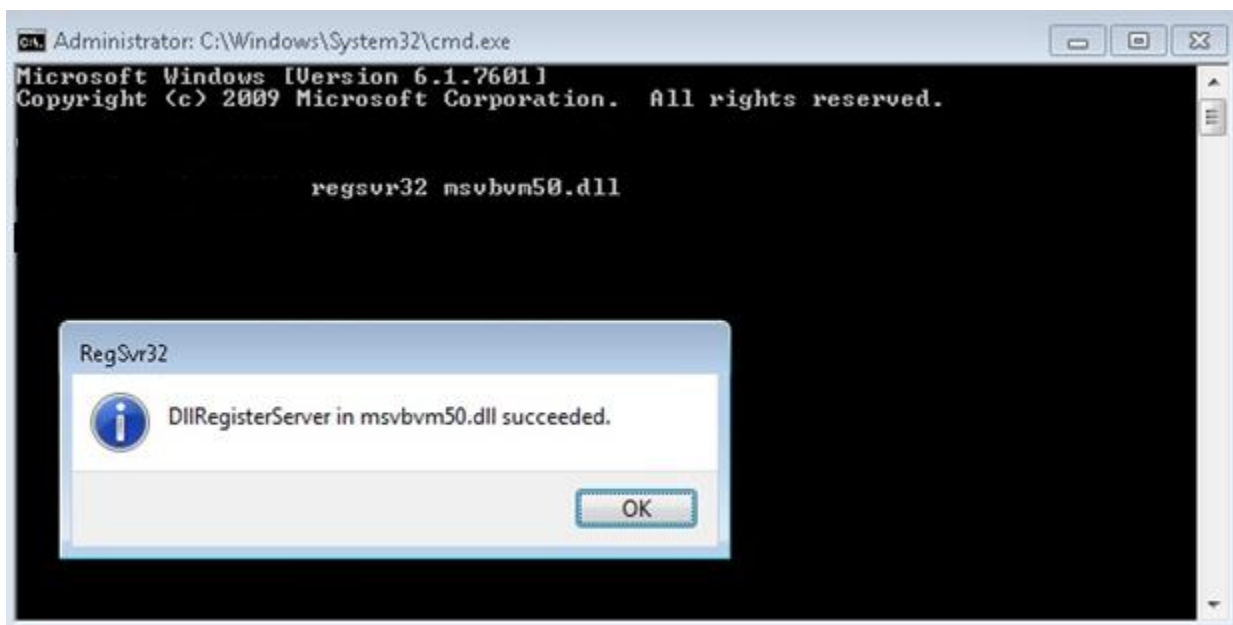


Figure 10 -- cmd prompt for 32 bit machine

